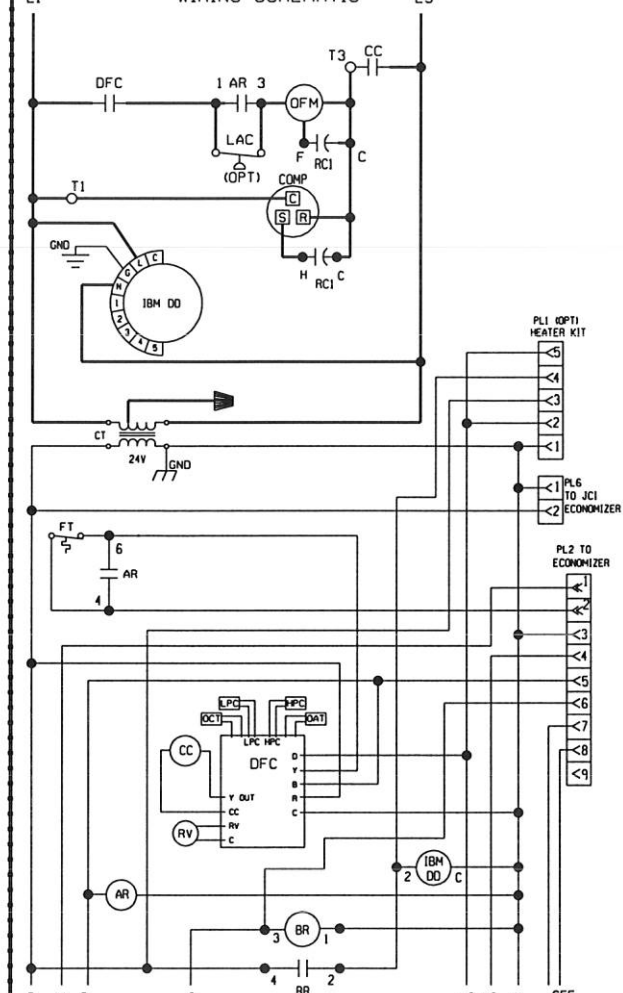
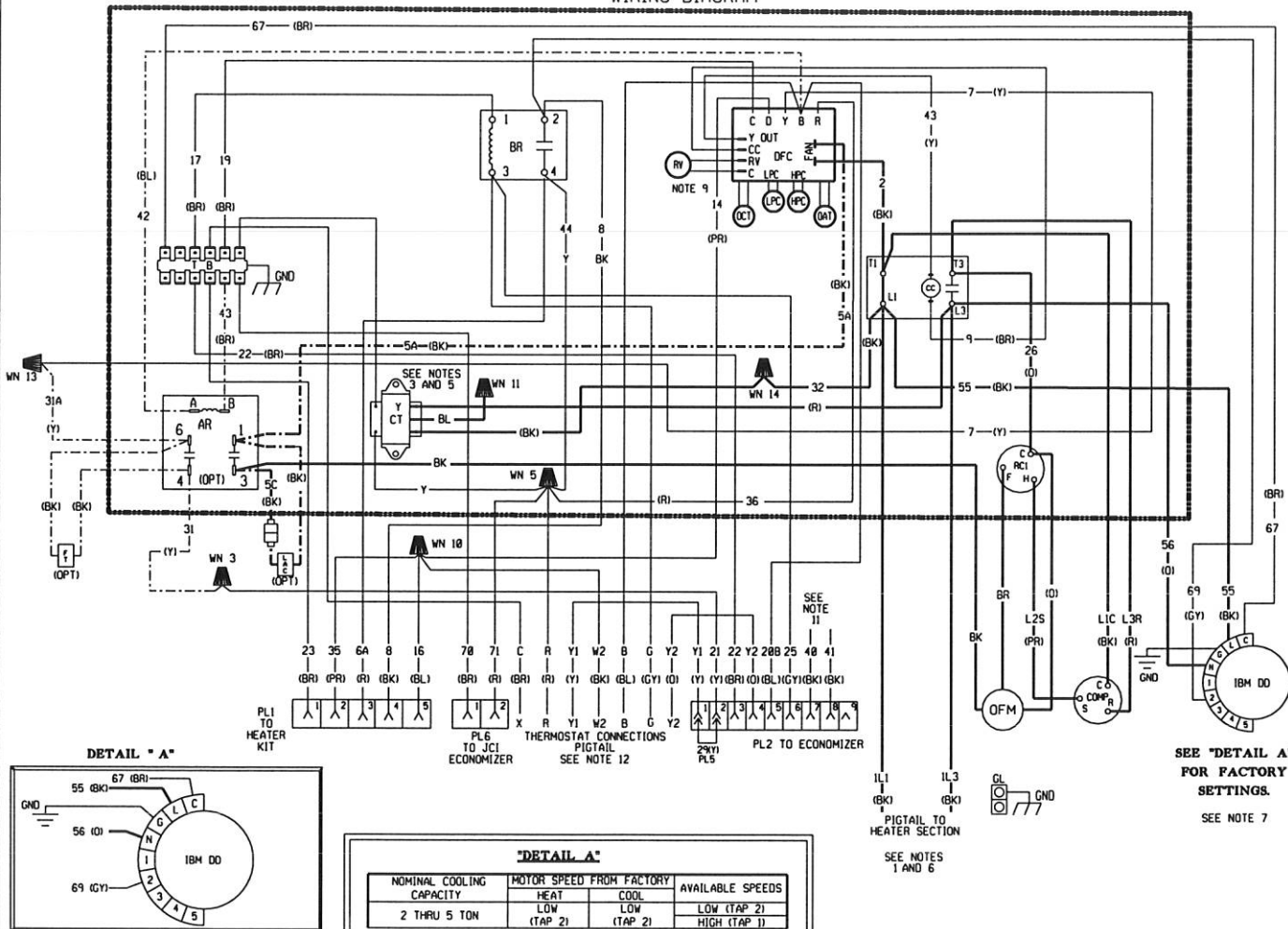
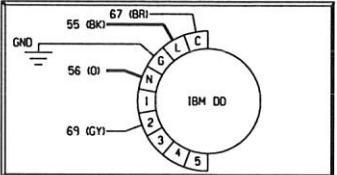


WIRING DIAGRAM

WIRING SCHEMATIC



DETAIL "A"



SEE "DETAIL A" FOR FACTORY SETTINGS.

"DETAIL A"

NOMINAL COOLING CAPACITY	MOTOR SPEED FROM FACTORY		AVAILABLE SPEEDS
	HEAT	COOL	
2 THRU 5 TON	LOW (TAP 2)	LOW (TAP 2)	LOW (TAP 2)
			HIGH (TAP 1)

COMPONENT CODE

AR	ACCESSORY RELAY	OPT	OPTIONAL
BR	BLOWER RELAY	PL	PLUG
CC	COMPRESSOR CONTACTOR	RC	RUN CAPACITOR
COMP	COMPRESSOR	RV	REVERSING VALVE
CT	CONTROL TRANSFORMER	TB	TERMINAL BLOCK
DFC	DEFROST CONTROL	TDG	TIME DELAY CONTROL
DR	DEFROST RELAY	WN	WIRE NUT
FT	FREEZE STAT		
GL	GROUND LUG		
GND	GROUND		
HPC	HIGH PRESSURE CONTROL		
IBM	INDOOR BLOWER MOTOR		
LAC	LOW AMBIENT CONTROL		
LPC	LOW PRESSURE CONTROL		
OAT	OUTDOOR AMBIENT TEMP		
OC	OUTDOOR COIL TEMP		
OFM	OUTDOOR FAN MOTOR		

NOTES:

- CONNECTORS SUITABLE FOR USE WITH COPPER CONDUCTORS ONLY.
- COMPRESSOR MOTOR THERMALLY PROTECTED. ALL 3 PHASE MODELS ARE PROTECTED UNDER PRIMARY SINGLE PHASE CONDITIONS.
- CONTROL TRANSFORMER PRIMARY LEADS: RED-COM., BLUE-208V., BLACK-230V.. TRANSFORMER FACTORY WIRED FOR 230 VOLTS ON 'J' & 'C' MODELS. INTERCHANGE BLACK & BLUE LEADS FOR 208 VOLT OPERATION.
- CONTACTOR FACTORY WIRED. CONNECT FIELD WIRE TO FACTORY SUPPLIED CONTACTOR WIRES IN ELECTRICAL BOX.
- SEE FUSE LABEL ON UNIT FUSE BOX FOR FUSE SIZING AND CLASSIFICATION.
- LOW VOLTAGE CIRCUIT IS N.E.C. CLASS 2 WITH A CLASS 2 TRANSFORMER, 24V, 50/60 HZ SUPPLIED.
- CONNECT FIELD WIRING IN GROUNDED RAIN TIGHT CONDUIT TO 60 HZ FUSED DISCONNECT.
- MOTOR FACTORY WIRED FOR CORRECT SPEED.
- SEE FUSE LABEL ON UNIT FUSE BOX FOR FUSE SIZING AND CLASSIFICATION.
- REVERSING VALVE ENERGIZED IN HEATING.
- ALL SWITCHES ARE SHOWN IN COOLING POSITION.
- WIRES FROM PL2 (17 & 8) GO TO THE MIXED AIR SENSOR ON THE OPTIONAL ECONOMIZER.
- Y2 IS USED ONLY FOR THE OPTIONAL ECONOMIZER.

WIRING INFORMATION

- LINE VOLTAGE
- FACTORY STANDARD _____
 - FACTORY OPTION - - - - -
 - FIELD INSTALLED - - - - -
- LOW VOLTAGE
- FACTORY STANDARD _____
 - FACTORY OPTION - - - - -
 - FIELD INSTALLED - - - - -
- REPLACEMENT WIRE
- MUST BE THE SAME SIZE AND TYPE OF INSULATION AS ORIGINAL (105 C° MIN.)
- WARNING
- CABINET MUST BE PERMANENTLY GROUNDED AND CONFORM TO I.E.C., N.E.C., C.E.C. AND LOCAL CODES AS APPLICABLE.

WIRE COLOR CODE

BK__BLACK	GY__GRAY	R___RED
BR__BROWN	O___ORANGE	W___WHITE
BL__BLUE	PK__PINK	Y___YELLOW
G___GREEN	PR__PURPLE	

ELECTRICAL WIRING DIAGRAM
208 / 230, 1 PHASE
DIRECT DRIVE / X-MOTOR
HEAT PUMP